

# Wisconsin Emergency Management Emergency Police Services (EPS)



November 2013

**I. PURPOSE:**

A. The Governor of the State of Wisconsin has the mandated responsibility to promote the general welfare and protection of its citizens during emergencies, both natural and man-made, including enemy attack. See §§ 323.01, 323.10 and 323.12 of the Wisconsin Statutes.

B. State law enforcement response groups are an important component of the state's overall emergency operation effort, especially during incidents that have severely stretched local law enforcement forces to and beyond their limits. See §§ 59.26, 59.27, 59.28, 61.29, 61.31 and 62.13 of the Wisconsin Statutes.

C. This manual is the foundation for proper coordination of state and local law enforcement activities to ensure the protection of life and property during all emergency situations by providing for a comprehensive program of emergency procedures, leadership, staffing, equipment, and the mobilization of resources.

**II. SITUATION AND ASSUMPTIONS:**

A. During emergencies local law enforcement agencies may need to expand their operations through local mutual aid agreements to provide the increased services required by the situation. See §§ 66.0313, 66.0314, and 66.0513 of the Wisconsin Statutes.

B. As the situation escalates, local resources may be depleted resulting in the diminishing of local capabilities. Mutual aid, state, and federal law enforcement response resources will need to be coordinated and deployed to assist local law enforcement in their efforts to provide continued protection to life and property.

C. The basic policy of state assistance to local government is to support local law enforcement. State resources may be deployed whenever the magnitude of the emergency is such that the best interest of the state is served.

**III. CONCEPT OF OPERATIONS:**

A. General State law enforcement agencies' emergency operations are an extension of their normal functions and responsibilities. These responsibilities may be coordinated through the State Emergency Operations Center and/or a local Incident Command Center.

B. State Law Enforcement activities and duties (protection) recognize and support the four phases of emergency management (i.e., mitigation, preparedness, response and recovery.)

#### IV. ORGANIZATION:

##### A. Appointment

###### 1. State

a) The Governor of the State of Wisconsin appoints the Administrator of the Division of Emergency Management (WEM). The Administrator serves as the State Director of Emergency Police Services (EPS).

b) The State Director of EPS has a Deputy Director of EPS who coordinates the EPS program on a daily basis.

c) The State Director of EPS shall designate the following to serve as consultants or advisors to the EPS Program and shall be designated the EPS staff:

(1) The Secretary of the Department of Corrections or designee shall serve as an EPS Advisor.

(2) The Superintendent of the State Patrol or designee shall serve as an EPS Staff Advisor.

(3) The Commanding Officer from each State Patrol District or designee to serve on each area EPS staff.

(4) The Department of Natural Resources Chief Warden or designee shall serve as an EPS Advisor.

(5) The Department of Natural Resources (DNR) District Warden or designee from each DNR district to serve on each area EPS staff.

(6) The Commanding Officer of the University of Wisconsin - Madison Police or designee shall serve as an EPS Advisor.

(7) The Commanding Officer of the Capitol Police or designee shall serve as an EPS Advisor.

(8) The Commanding Officer for the Department of Justice -Division of Criminal Investigation or designee shall serve as an EPS Advisor.

(9) The National Guard Planning, Operations and Military Support Officer or designee shall serve as an EPS Advisor.

###### 2. Area

a) The Area Director of EPS is elected by the law enforcement officials within their EPS area. The elected Area Director appoints one Sheriff

b) and one Chief of Police from within the area as EPS area deputies. The Area Director serves a renewable four-year term.

c) Area Director elections are hosted by the EPS Deputy Director every four-years, directly after each gubernatorial election and after newly elected or re-elected Sheriff's are sworn into their new terms in office.

### 3. County

The Sheriff will be the director of EPS for their respective county. The Sheriff, in coordination and cooperation with the County Emergency Management Director, will appoint a police administrator from within the county to be the Deputy Director of EPS for their county.

### 4. Municipal

The Chief of Police will be the Director of EPS for their municipality and may appoint a Deputy Director of EPS, if necessary.

## B. Structure

### 1. State

Wisconsin EPS consists of all state law enforcement agencies, including their personnel, equipment, and facilities. The Wisconsin National Guard may be utilized as directed by the Governor.

2. Area EPS will consist of the Area EPS staff that provides overall police coordination and support, as delineated in IV.A.2, during an emergency.

### 3. County and Municipal

a) The county and municipal EPS will consist of all regular and trained personnel, equipment, and facilities within their jurisdictions.

b) Reserve members of police organization, whether designated as police reserves, posse, or special police, will be attached to police or sheriff departments with which they are duly registered.

**C. State Responsibilities**

## 1. The Director and Deputy Director of EPS will:

- a) Coordinate and facilitate the annual visit to the state correctional facilities to review and update work stoppage and disturbance plans.
- b) Review EPS planning for emergency management operations at all levels of the state.
- c) Have a working knowledge of state and area law enforcement resources.
- d) Coordinate training programs, certify instructors, and provide instructional material for training police at all levels.
- e) Assist counties with the development of law enforcement sections of county/local emergency management plans.
- f) Participate in law enforcement exercises.
- g) Actively educate personnel from 911 communications officers, local and county law enforcement command staff and administrators on the EPS program and protocols.
- h) Complete an after-action-review of each EPS activation.
- i) Coordinate and provide oversight to the states Aligned Law Emergency Response Teams (ALERT) consisting of the regional tactical and bomb teams.
- j) Operate and maintain WEM-EPS equipment, i.e., MCC, radio cache, light tower, repeater tower.
- k) Work with the WEM Fire Services Coordinator to ensure SEOC coverage during significant events.
- l) Actively participate as a law enforcement representative in state level planning meetings such as Hostile Action Based (HAB), Tactical Emergency Medical Services (TEMS) and others, as deemed appropriate.

2. The Division of State Patrol, Department of Natural Resources - Bureau of Law Enforcement, Department of Justice - Division of Criminal Investigation, Wisconsin Capitol Police and Wisconsin National Guard responsibilities are outlined in their individual agency emergency operations plans.

3. The Area EPS Director will:

l) Assist and promote the organization, assist with planning, coordinating, and testing EPS at all levels.

m) Develop Standard Operating Procedures (SOPs) for their area.

n) Have a working knowledge of resources (i.e., manpower, equipment) for their respective areas.

o) Organize and coordinate the dispatch of resources in their mutual aid area in times of emergencies.

p) Keep the State EPS Director informed during emergencies.

q) Participate in state/area Emergency Operating Centers when requested by the State EPS Director.

g) Assist the Deputy Director of EPS with completion of an after-action-review of each EPS activation detailing areas to sustain and those to improve.

h) Be prepared to respond to request activation of the Aligned Law Enforcement Response Teams (ALERT) Teams within their area.

## **V. PLAN DEVELOPMENT AND MAINTENANCE:**

A. Each state agency (law enforcement group) will be responsible for developing and maintaining an Individual Agency Plan, including Standard Operating Procedures, which reflect the operational capabilities (e.g., manpower, equipment) of their respective department or agency.

B. The Deputy Director of EPS will coordinate the periodic review or update of each agency's Standard Operating Procedures and notify each EPS Area Director of results of the annual review.

C. Conduct after-action reviews of all exercises and major incidents.

D. Create and maintain the two groups of confidential documents (i.e., State Correctional Institution Disturbance Plans, Wisconsin National Guard State Correctional Institution Work Stoppage Plans) in place to facilitate the augmentation of all forces.

## **V. STATE AGENCY RESOURCES**

### **A. Wisconsin Emergency Management**

Upon notification that an emergency has occurred in the State of Wisconsin, the Director of EPS or the Deputy Director of EPS shall take the following actions:

1. Mobilize to the EOC members of the emergency operations staff necessary for operation. Attend briefings of emergency operations staff, if required.
2. Coordinate requests for law enforcement assistance from state agencies.
3. Coordinate the deployment of the Mobile Command Center (MCC) if requested by an EPS Area Director and deemed necessary to support the local activity.
4. Coordinate WEM radio cache, when requested and required.
5. Provide resources to implement the pass system, as needed.
6. Provide for additional law enforcement resources and assist coordinating Wisconsin National Guard support.
7. Report to the local EOC or to the scene, if necessary. In these cases, assign staff to continue operations in the State EOC, as needed.
9. Determine the availability and readiness of the states All-hazards Type 4 Incident Management Teams for potential deployment.

### **B. Department of Transportation – Division of State Patrol**

In the event of a call for law enforcement services greater than may be sufficiently addressed by local law enforcement, the Division of State Patrol may be called upon to provide immediate law enforcement services. The mission of the Division of State Patrol will be to respond to the designated area(s) and to provide perimeter security, traffic control, escorts, and other law enforcement support that may be mutually agreed upon between the local law enforcement authority and the appropriate Division of State Patrol District Commander.

## C. Department of Natural Resources

In the event of a call for law enforcement services greater than may be sufficiently addressed by local law enforcement, the Department of Natural Resources Conservation Wardens may be called upon to provide immediate law enforcement services. The mission of the Conservation Wardens will be to respond to the designated area(s) and to provide any law enforcement support that may be mutually agreed upon between the local law enforcement authority and the appropriate Department of Natural Resources Regional Warden/Captain.

## D. Department of Justice - Division of Criminal Investigation

The Division of Criminal Investigation (DCI) is committed to ensuring the protection of life and property during all emergency situations. To assist other law enforcement agencies in this endeavor, DCI will gather intelligence information and investigate crimes when deemed appropriate. DCI will also act as a conduit in obtaining assistance from other Wisconsin Department of Justice personnel, such as the Wisconsin Crime Lab and its Field Response Team, the TIME system and, when necessary, obtain legal assistance from the department's assistant attorneys general. Personnel from the Division of Criminal Investigation will be available for assignment to the Command Center.

## E. University of Wisconsin Police Departments

***In the event of a call for law enforcement services greater than may be sufficiently addressed by local law enforcement The University of Wisconsin Police Departments may be called upon to provide immediate law enforcement services.*** In the event of an EPS call for assistance in all aspects of law enforcement may be provided until such time as it was mutually agreed upon that additional resources were no longer necessary.

The following University of Wisconsin Police Departments have armed police officers:

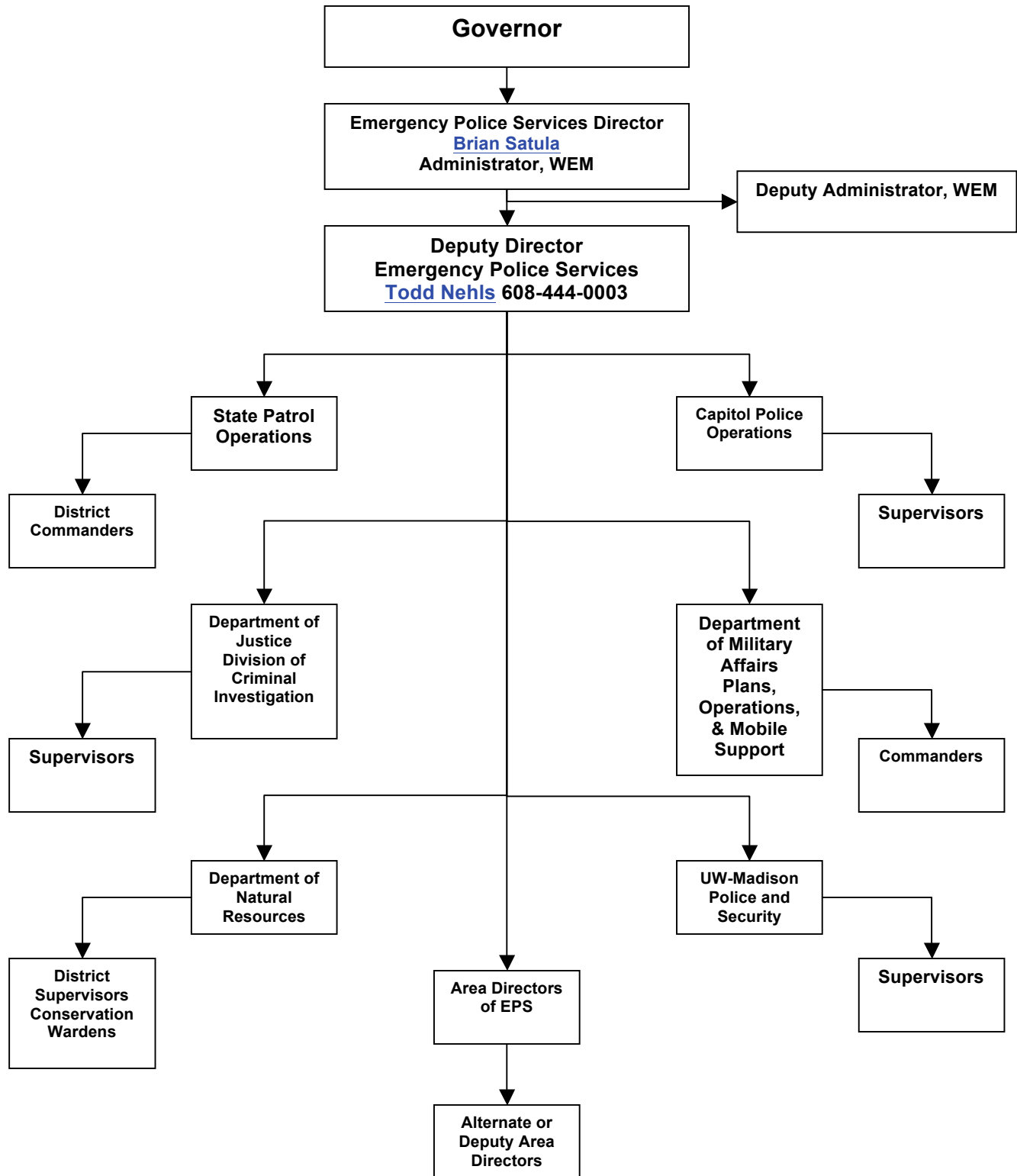
- Milwaukee
- Green Bay
- Whitewater
- Madison
- Eau Claire
- Parkside
- Oshkosh
- Platteville
- Stout
- La Crosse
- Stevens Point
- Superior
- River Falls



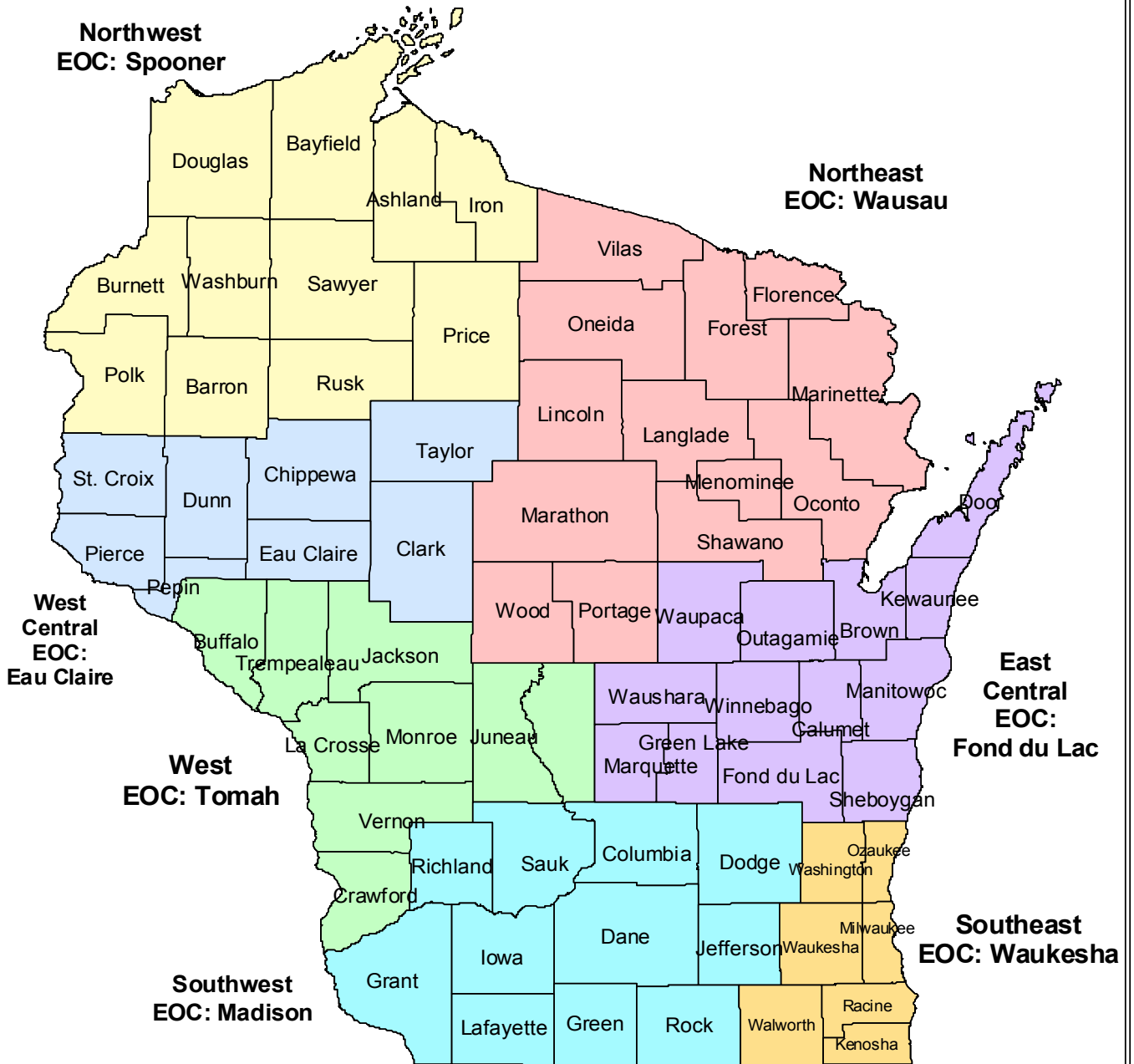
Legal References (Attached).

# WISCONSIN EMERGENCY POLICE SERVICES

## State Organization and Responsibilities during Emergencies



# Emergency Police Services Area Map



March 30, 2001